



PCSecurityShield

SpamShield 4.0

Power by  LashBack

Quick Guide to Installation

Rev: March 2007



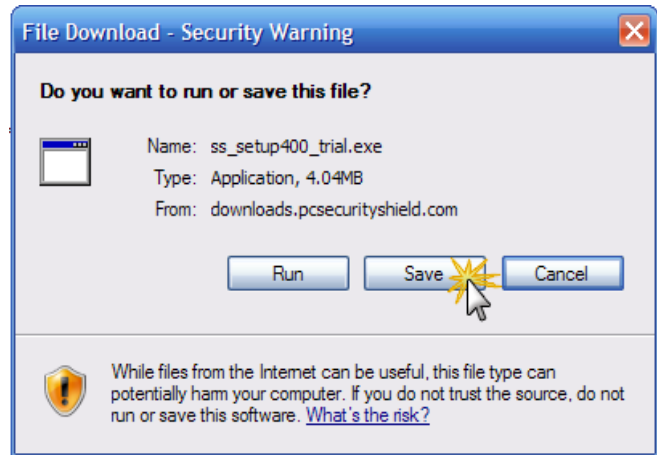
SpamShield Installation

Before installing SpamShield, please read installation instructions carefully. Please make sure that your personal computer meets the minimal system requirements. Make sure all programs are close before installing SpamShield as other active programs may interfere with the installation.

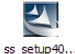
Installation Process

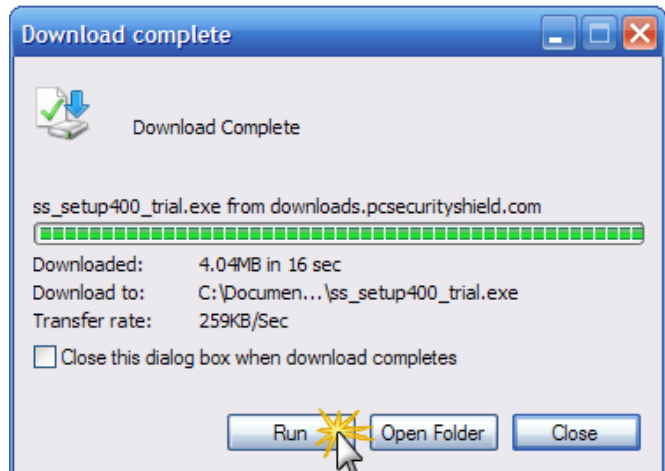
Step1: Downloading SpamShield Setup

- To install, download and "Save" the SpamShield setup files on your Desktop (Recommended)



Step 2 Download Complete

- Next, verify that the download is complete.
- Click "Run".
- You may have to go to your desktop and double click the **SpamShield4Setup.exe**  icon.



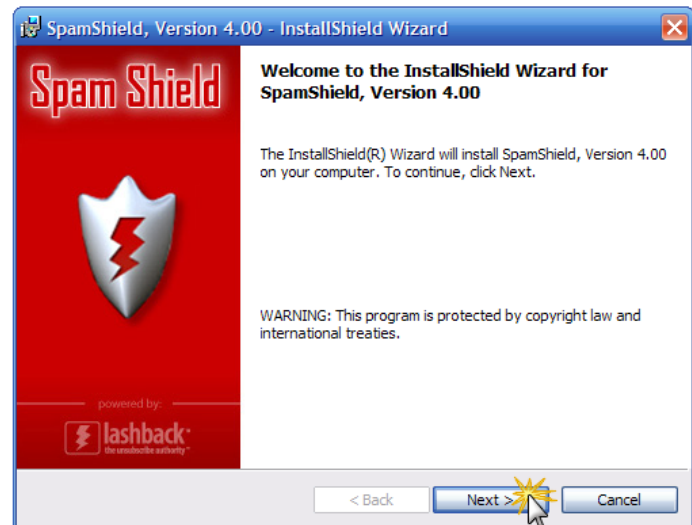
Note: If you are running Windows XP SP2 you will get this standard message. Click "Run" to continue.





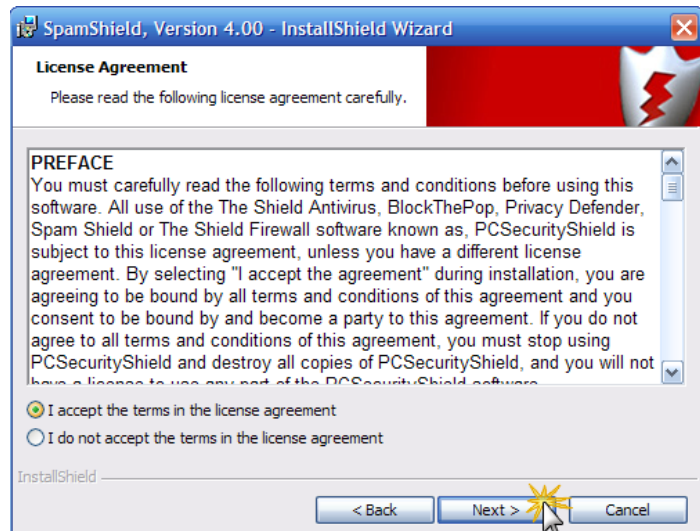
Step 3: Installing SpamShield

- Now, you are ready to begin the installation of SpamShield.
- Click "**Next**" to continue.



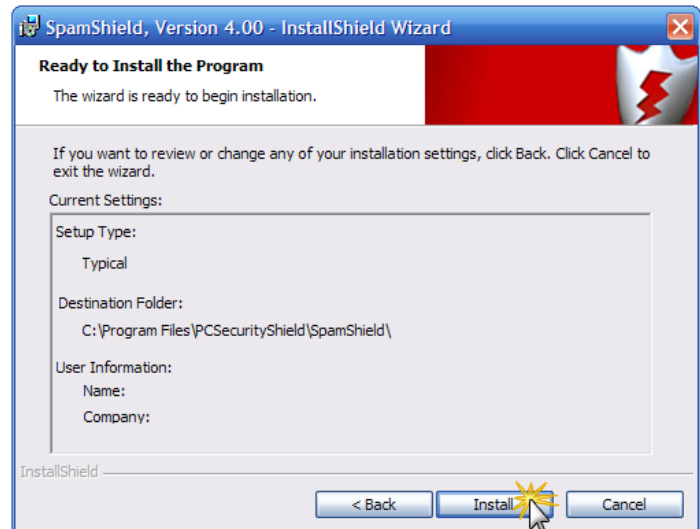
Step 4 License Agreement

- Read the End-User License Agreement and click on the radio button to "**Accept**" the terms and conditions and then click "**Next**". If you do not accept, you cannot continue with the installation.



Step 5: Location Destination

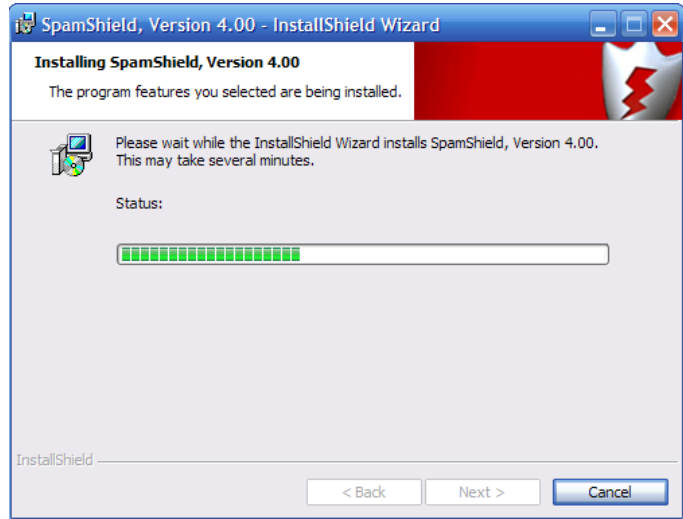
- We recommend you use the directory suggested by the Wizard.
- Click "**Next**" to continue.
- If you need to change any settings use the "**Back**" button. Otherwise, click "**Install**" to proceed.





Step 6: Preparing Installation

- The Installation Wizard prepares to install Security Shield.



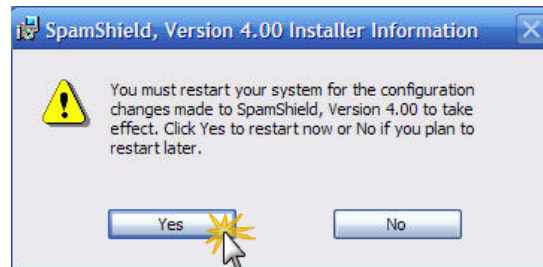
Step 7: Install Shield Wizard Completed

- Installation and setup is completed
- Click "Finish"



Step 8: Restart

- You must restart your computer for the installation to take effect.





Step 9: Register

- Enter your registration email address and password. This was provided via Email when you purchased SpamShield.

LashBack - Register

Please enter your registration email address and password. This was provided to you when you purchased SpamShield.

Email Address:

Password: